

# EJECTOR PLATE RETURN DETECTION SWITCHES



Printed in Red

The volume discount rate is also applicable to alteration cost. All price & lead time are to be quoted.



Order

Catalog No.

EGS-V



Delivery

SGP Stock

For area out of Singapore please refer to P.i.

Part No.	Catalog No.	U/Price			
		1~9	10~19	20~49	50~100
Set of ①②③	EGS (incl. 2 pc. of CB5-15)				
Set of ④⑤③	EGS-V (incl. 2 pc. of CB5-15)				
Switch ①	V-156-1A5-T				
L-angle plate ②	EGS-ANGLE				
Heat insulation plate ③	EGS-BOARD				
Switch ④	V-15-1A5-T				
L-angle plate ⑤	EGS-AV				

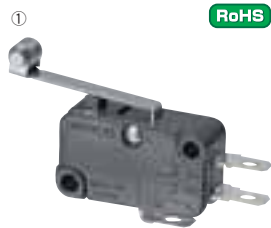
Quotation

CB5-15 is included only in the set products.



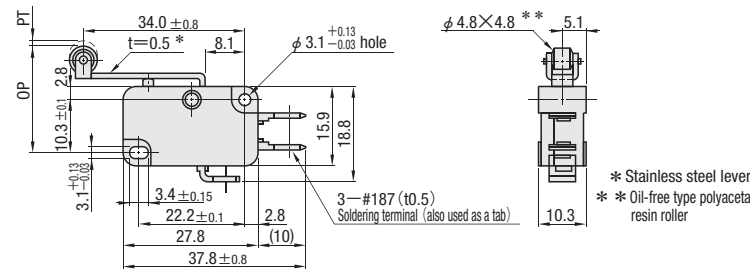
Examples of bolt hole boring on a mold base

Bolt hole boring examples	Switch mounting examples
<p>■ EGS · EGS-V</p>	<p>■ EGS</p> <p>■ EGS-V</p>
<p>■ EGS-V</p>	<p>■ EGS-V</p>



RoHS

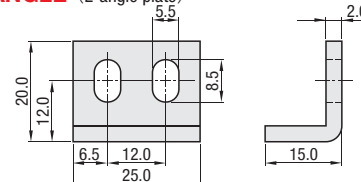
① V-156-1A5-T (Microswitch: Hinged roller lever)



\* Stainless steel lever  
\* Oil-free type polyacetal resin roller



② EGS-ANGLE (L-angle plate)



① Microswitch (hinged roller lever type)

Manufactured by Omron

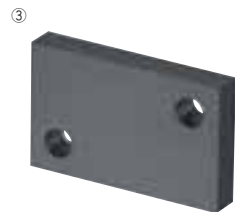
- Force needed to start 125gf
- Minimum return force 14gf
- Maximum movement till starting PT 4.0mm
- Minimum movement after starting 1.6mm
- Maximum differential motion 1.5mm
- Operation point OP 20.7±1.2mm

Standard

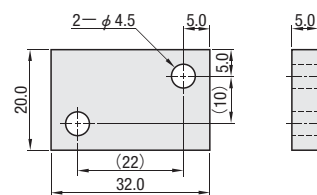
- Rated voltage: 250V • Rated current: 15A
- Heat resistance: up to 150°C

② M Steel Plate (JIS SPCC)

③ M Bakelite (black)

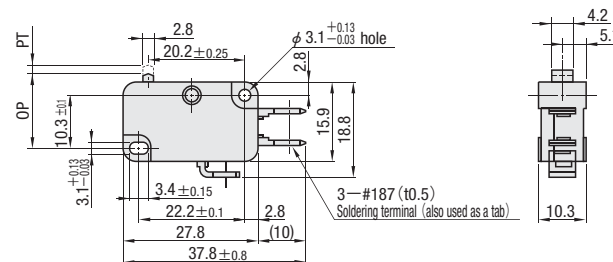


③ EGS-BOARD (Heat insulation plate)



RoHS

④ V-15-1A5-T (Microswitch: Push button)



④ Microswitch (push button type)

Manufactured by Omron

- Force needed to start 200gf
- Minimum return force 50gf
- Maximum movement till starting PT 1.2mm
- Minimum movement after starting 1.0mm
- Maximum differential motion 0.4mm
- Operation point OP 14.7±0.4mm

Standard

- Rated voltage: 250V • Rated current: 15A
- Heat resistance: up to 150°C

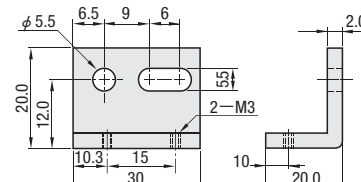
⑤ M Steel Plate (JIS SPCC)

▲ CB3-20 (1 pc.)  
M3 nut (2 pc.)

③ M Bakelite (black)



⑤ EGS-AV (L-angle plate for push button type microswitch)



③ EGS-BOARD (Heat insulation plate)

