

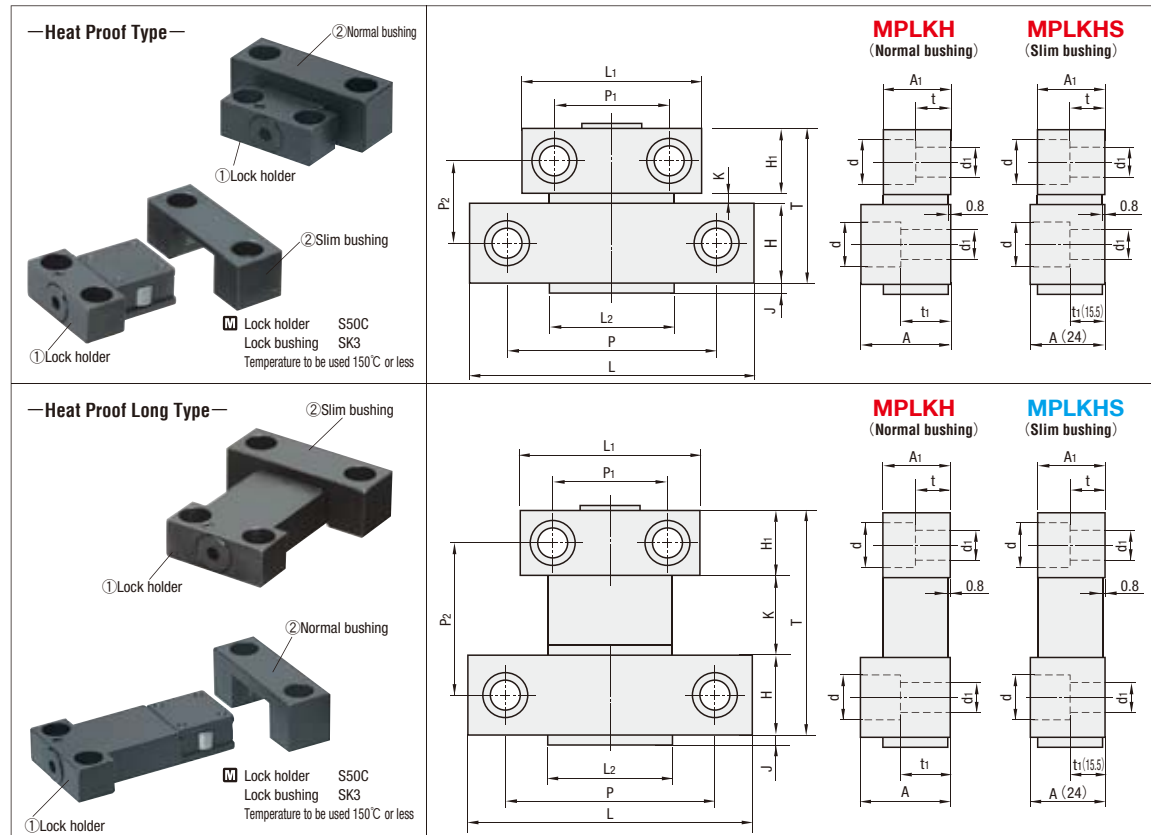
# ROLLER LOCK SETS (NORMAL BUSHINGS/SLIM BUSHINGS)

—HEAT PROOF TYPE / HEAT PROOF LONG TYPE—

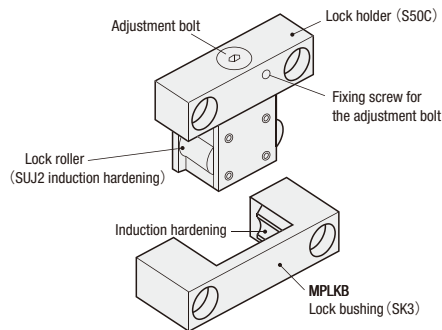


Printed in Red

The volume discount rate is also applicable to alteration cost. All price & lead time are to be quoted.

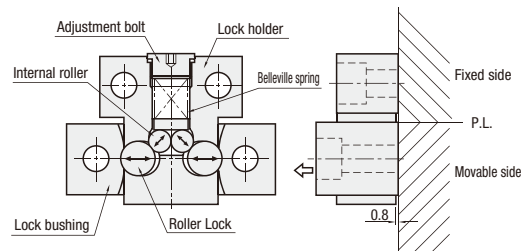


## Features



- Due to usage of heat resistance spring, you can use this lock set at points of higher temperature compared to those of the standard type.
- The dimensions are the same as those of the standard type, permitting changeover from the standard type.
- To differentiate this lock set from the standard type, the adjustment bolt has been made different from that of the standard type.

## Structure and Usage



- Mount it in parallel to the parting line.
- The roller lock set can be removed by pulling it in the direction of arrow in the figure.

## Load Adjustment and Load Characteristics

- Opening/closing load can be adjusted using an Allen wrench. The load is maximum when the adjustment bolt is fully tightened, 50% when it is loosened a half rotation, when it is loosened 1 rotation or more.
  - The load for mold closing is about 50% of mold opening.
  - A fixing screw is provided on the load adjustment bolt. Loosen it to perform load adjustment, and make sure to tighten it after adjustment is completed.
- Note : Make sure to assemble the right and left units symmetrically for well balanced operation.

## Heat Proof Type (①+②sets)

Catalog No.	Type	No.	Max. usable load (2 sets under normal temp)	L	L1	L2	T	H	H1	J	K	P	P1	P2	A	A1	t	t1	d	d1	△	U/Price
																					2 pcs. each	1~9 sets
MPLKH (Normal bushing)		20	1961N {200kgf}	54	42	25	42	22	18	2	2	40	28	22	24	16	9	16	11	6.5	CB6-20 CB6-25	Quotation
		30	2942N {300kgf}	65	46		48.5	25	20	3.5	3.5	50	31	26				7	7	7	CB6-30 CB6-35	
		60	5884N {600kgf}	73	50	35	56.5					52	33	34	27	19	9.5	17	14	9	CB8-30 CB8-35	
		80S	7845N {800kgf}	103	65	48	58	30	24	4	4	76	42	31	34	25	13	19	17	11	CB10-30 CB10-35	
MPLKHS (Slim bushing)		30	2942N {300kgf}	65	46		48.5	25	20	3.5	3.5	50	31	26				11	7	7	CB6-25 CB6-30	Quotation
		60	5884N {600kgf}	73	50	35	56.5					52	33	34	24	19	9.5	15.5	14	9	CB8-25 CB8-30	
		80S	7845N {800kgf}	103	65	48	58	30	24	4	4	76	42	31	34	25	13	19	17	11	CB10-30 CB10-35	

## Heat Proof Long Type (①+②sets)

Catalog No.	Type	No.	Max. usable load (2 sets under normal temp)	L	L1	L2	T	H	H1	J	K	P	P1	P2	A	A1	t	t1	d	d1	△	U/Price
																					2 pcs. each	1~9 sets
MPLKH (Normal bushing)		60L	5884N {600kgf}	73	50	35	79.5	25	20	3.5	34.5	52	33	57	27	19	9.5	17	14	9	CB8-30 CB8-35	Quotation
		80	7845N {800kgf}	103	65	48	87.5	30	24	4	42.5	62	33	65	34	25	13	19	17	11	CB10-30 CB10-35	
		100L	9807N {1000kgf}	133	85	58	107.5	35	28	5	5	82	42	34	36	27	15	21	19	13	CB12-30 CB12-35	
MPLKHS (Slim bushing)		80	7845N {800kgf}	73	50	35	87.5	25	20	3.5	42.5	52	33	65	24	19	9.5	15.5	14	9	CB8-25 CB8-30	Quotation

## Lock Bushing Component (② only) \* Bushing is common with standard type.

Catalog No.	Type	No.	Application	U/Price
				1~9
MPLKB (Normal bushing)		20	For MPLK20	Quotation
		30	For MPLKH30 For MPLKHS30	
		6080	For MPLKH60·80·60L·80S For MPLKHS60·80·80S	
		100	For MPLKH100·100L	
Catalog No.	Type	No.	Application	U/Price
				1~9
MPLKSB (Slim bushing)		30	For MPLKHS30 For MPLKH30	Quotation
		6080	For MPLKH60·80·80S For MPLKHS60·80·80S	

※For use in 2-color molding, insert molding, etc. that require additional lock bushings.



Catalog No.

MPLKH60  
MPLKH80S  
MPLKHS30  
MPLKB6080



Delivery

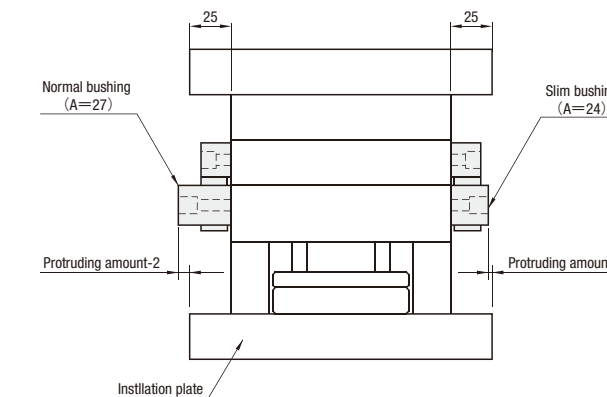
Printed in Red SGP Stock 3 Days  
Printed in Blue

\*For area out of Singapore please refer to P.I.

## Quantity discount rate

Quantity	1~9	10~19	20~49	50~100
Rate	—	5%	10%	15%

## Comparison of Normal Bushing and Slim Bushing



## About slim bushings

- For roller lock set slim bushings, the height of lock bushing (A dimension) is standardized as 24mm. The one side of molding base installation board is a standard corresponding to the amount of protrude 25mm.
- When mold is installed in the molding machine, the part where roller lock set protrudes interferes in the tie bar. It becomes the damage prevention of roller lock set and the tie bar. Moreover, there is no trouble in keeping and transporting.
- Although the heights of bushings (A→24, t1→15.5) become lower, the load and other dimensions remain the same as conventional products.