

# MAGNET LOCK SETS

— COMPACT TYPE —

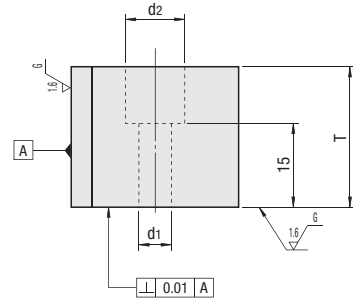
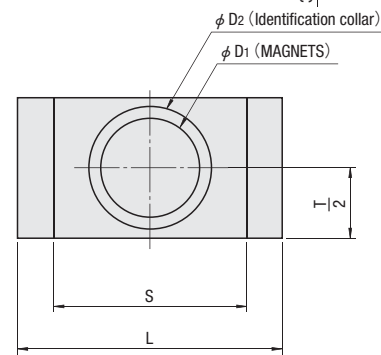
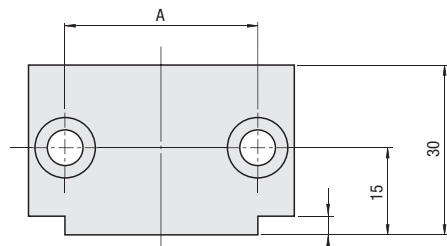


Printed in Red



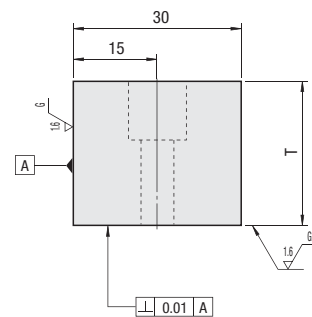
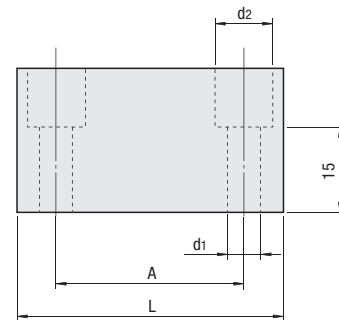
RoHS

## Holder



SS400 magnet MLKC20 · 50 Neodymium magnet (Heat resistance : up to 80°C)  
MLKC40 · 100 SmCo magnet (Rare earth) (Heat resistance : up to 200°C)

## Block



SS400

The volume discount rate is also applicable to alteration cost.  
All price & lead time are to be quoted.

Catalog No.	Adhesion strength (per set under 20°C)	A	S	L	T	D <sub>1</sub>	D <sub>2</sub>	Identification collar	d <sub>1</sub>	d <sub>2</sub>	A
MLKC 20	196.1N {20kgf}	36	36	50	25	17.5	22	Gold (Brass)	6.6	11	CB6—25 4 pcs.
MLKC 40	392.2N {40kgf}							Silver (Aluminum)			Spring washers 4 pcs.
MLKC 50	490.3N {50kgf}	52	52	70	40	29.5	34	Gold (Brass)	9	14	CB8—30 4 pcs.
MLKC100	980.6N {100kgf}							Silver (Aluminum)			Spring washers 4 pcs.

Adhesion strength per set indicates the vertical force by which a holder and a block adhered each other can be separated.



Order

Catalog No.  
MLKC100



Delivery

SGP Stock

For area out of Singapore please refer to P.i.

## Quantity discount rate

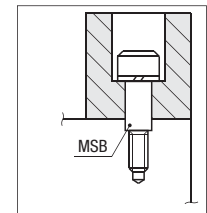
Quantity	1~9	10~19	20~49	50~100
Rate	—	5%	10%	15%

Catalog No.	U/Price
	1~9 sets
MLKC 20	<b>Quotation</b>
MLKC 40	
MLKC 50	
MLKC100	

## Features

- MLKC40 · 100 comparing with conventional products are 50%~60% compacter.
- Is easier to install compared with other types of mold locking units.
- Requires little slowing down for mold closing. (making the molding cycle more efficient)
- Install the magnet lock sets with the mold closed. Place them onto the mold's center, and fasten with the supplied bolts.
- Install them so that the magnetic face is in parallel to the parting line.
- Finish the plate surfaces so that the lock's magnets tightly couple together.
- Use MSB Shoulder Bolts if bolt breakage is anticipated. To use a MSB Shoulder Bolt, make sure to create a counterbore on the plate. Finish the counterbore into H7 or so.

## How to Mount



Example

