

THERMOCOUPLES

— SHEATHED THERMOCOUPLES • HEAT PROOF TYPE/COUPLING NIPPLE FOR THERMOCOUPLE —

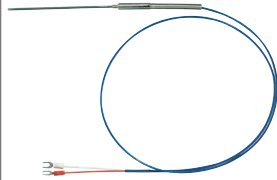


Printed in Red

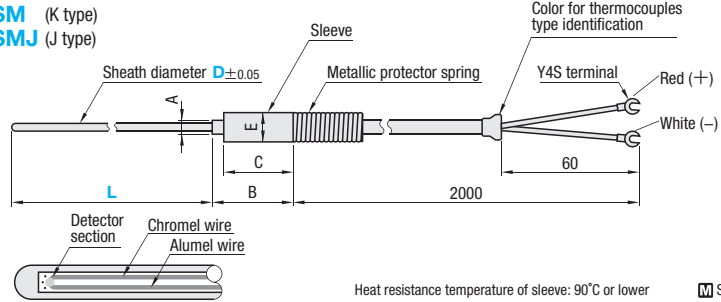
The volume discount rate is also applicable to alteration cost.
All price & lead time are to be quoted.

Sheathed Thermocouples

RoHS



SSM (K type)
SSMJ (J type)



Heat resistance temperature of sleeve: 90°C or lower M SUS316

Thermocouples type (Color)	Strand resistance Ω/m	A	B	C	E	Max. usable temperature	Part Number		L	U/Price 1~9					
							Type	D		50mm increments	L50	L100	L150	L200	L250
K type (Blue)	52.0	2.7	35	30	6.0	500°C	SSM	1	50~300						
	20.0					1.6									
	9.8	4.5				700°C		2.3							
	5.0					8.0		750°C		3.2					
	2.25					800°C		4.8							
J type (Yellow)	33.6	2.7	35	30	6.0	450°C	SSMJ	1	50~150						
	12.8					1.6									
	6.3	4.5				500°C		2.3							
	3.2					8.0		650°C		3.2					
	1.4					750°C		4.8							

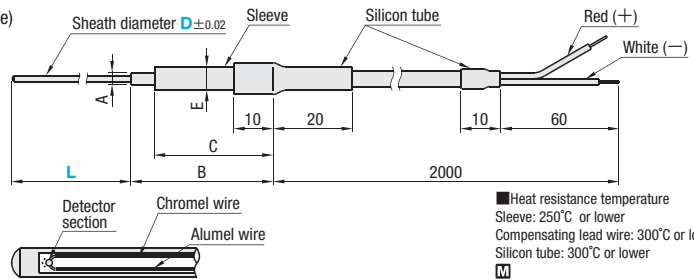
Quotation

Sheathed Thermocouples

RoHS



TMK (K type)

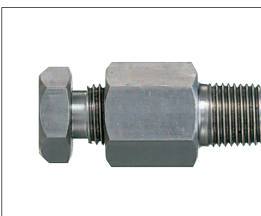


Heat resistance temperature
Sleeve: 250°C or lower
Compensating lead wire: 300°C or lower
Silicon tube: 300°C or lower
M
Sheath: SUS316
Sleeve: SUS303

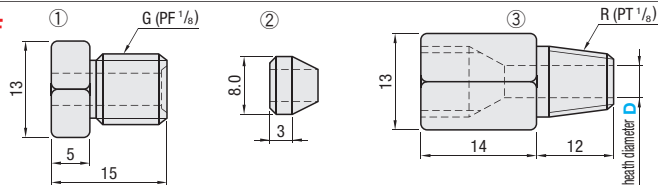
※This product can be used under high temperature conditions.

Thermocouples type	Max. usable temperature	A	B	C	E	Part Number		L	U/Price 1~9					
						Type	D		50mm increments	L50	L100	L150	L200	L250
K type	650°C	2.8	36	30	5.0	TMK	1.6	50~300						
	700°C						2.3							
	750°C	4.5					7.0		3.2					
	800°C						9.0		4.8					

Quotation



CSF

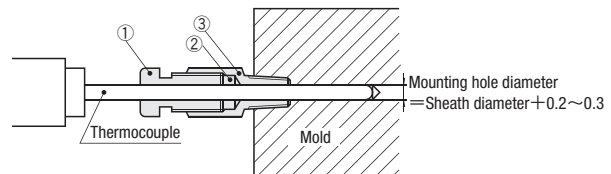


M ①SUS304 ②Brass (C3604) ③SUS304

Part Number Type	D	U/Price 1~9	
CSF	1		
	1.6		
	2.3	Quotation	
	3.2		
	4.8		



Example Tightening the plug ① causes the component ② to tighten the thermocouple's sheath and firmly fasten it.



Quantity discount rate

Quantity	1~9	10~19	20~49
Rate	—	5%	10%



Order

Part Number — L

TMK1.6 — 100
SSM1 — 50
CSF 1

Printed in Red

Printed in Blue



Days to Ship

SGP Stock

3 Days

For area out of Singapore please refer to P.I.

Stocks Availability Subjected to Prior Sales.