

LEADER PINS FOR RUBBER MOLD/LEADER BUSHINGS FOR RUBBER MOLD

—TAPER TYPE • SPHERICAL TYPE—

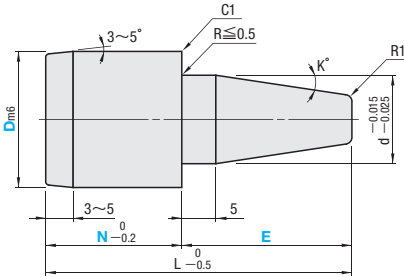


Printed in Red

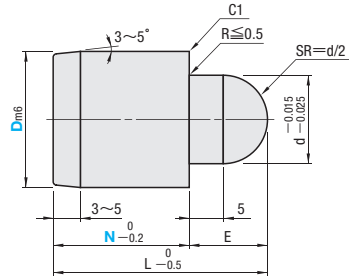
The volume discount rate is also applicable to alteration cost.
All price & lead time are to be quoted.



GMT (Taper type)



GMR (Spherical type)



Ⓢ A center hole left on both ends.

SCM415
S8HRC~

■ Taper type

Press-fit section Dm6	d	L	K°	Part Number		N	E	U/Price 1~9
				Type	D			
16	+0.018 +0.007	10		GMT	16	14	14	Quotation
						19	19	
						14	19	
20	+0.021 +0.008	13		GMT	20	14	24	Quotation
						29	29	
						34	34	
						14	19	
						19	19	
						19	24	
						29	29	
						34	34	

■ Spherical type

Press-fit section Dm6	d	L	E	Part Number		N	U/Price 1~9
				Type	D		
16	+0.018 +0.007	10	29	10	GMR	16	19
						20	
20	+0.021 +0.008	13	30	11	GMR	20	Quotation



Order

Part Number — N — E
GMT20 — 14 — 19
GMR16 — 19



Days to Ship

Printed in Red • Printed in Blue
SGP Stock 3 Days

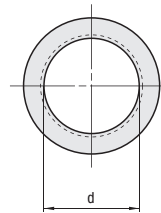
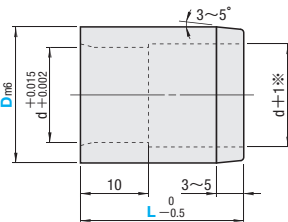
Ⓢ For area out of Singapore please refer to P.I.

■ Quantity discount rate

Quantity	1~9	10~19	20~29
Rate	—	5%	10%



GMB



※ There is no (d+1) relief machining in the case of L=9.

SCM415
S8HRC~

Press-fit section Dm6	d	Part Number		U/Price 1~9
		Type	D	
16	+0.018 +0.007	GMB	16	9
				14
				19
20	+0.021 +0.008	GMB	20	9
				14
				19
				24
				29



Order

Part Number — L
GMB16 — 19



Days to Ship

Printed in Red • Printed in Blue
SGP Stock 3 Days

Ⓢ For area out of Singapore please refer to P.I.

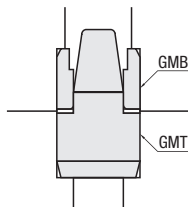
■ Quantity discount rate

Quantity	1~9	10~19	20~29
Rate	—	5%	10%



Example

■ Example of leader pins and bushings



■ Example of leader pins and bushings

