

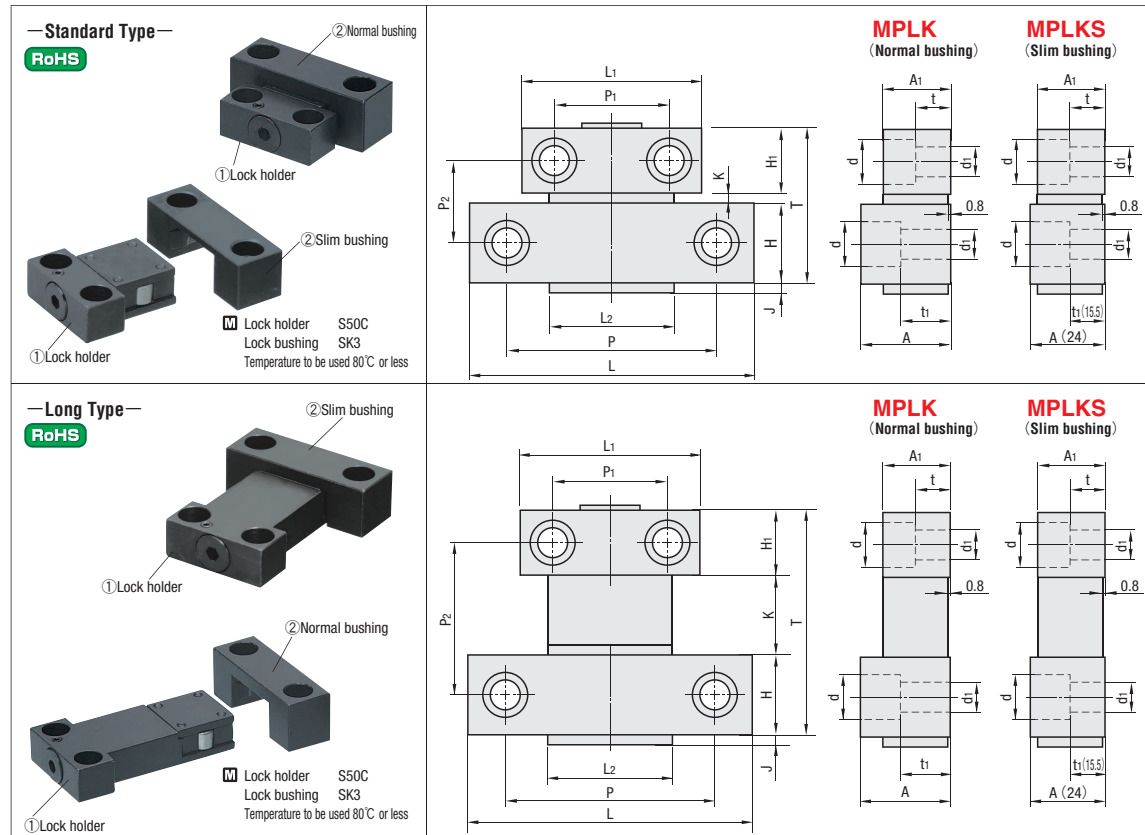
# ROLLER LOCK SETS (NORMAL BUSHINGS/SLIM BUSHINGS)

— STANDARD TYPE / LONG TYPE —

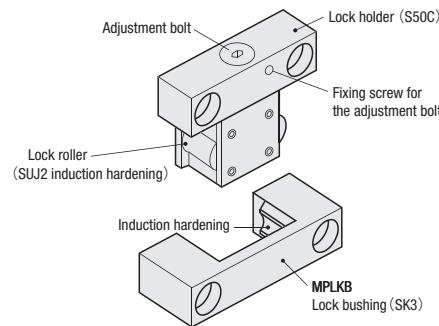


Printed in Red

The volume discount rate is also applicable to alteration cost.  
All price & lead time are to be quoted.



## Features



### Roller Lock Set Features

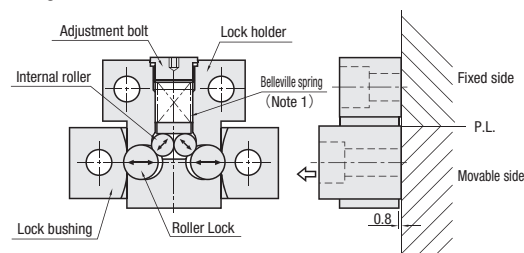
- Enables well-balanced mold opening/closing through its mechanism composed of a Belleville spring, internal rollers and lock rollers.
- Its rollers prevent uneven wear.
- The lock bushing's vertically symmetrical design allows a worn piece to be reused by reinstalling it in reverse.
- The lock holder's back recess enables it to be used even on a stepped mold plates.

### Load Adjustment and Load Characteristics

- Opening/closing load can be adjusted using an Allen wrench. The load is maximum when the adjustment bolt is fully tightened, 50% when it is loosened a half rotation, 0 when it is loosened 1 rotation or more. ※ For MPLK10, the load decreases about 25% when the adjustment bolt is loosened a half rotation, 70% when it is loosened one rotation.
- The load for mold closing is about 50% of mold opening.
- A fixing screw is provided on the load adjustment bolt. Loosen it to perform load adjustment, and make sure to tighten it after adjustment is completed.

Note : Make sure to assemble the right and left units symmetrically for well balanced operation.

## Structure and Usage



(Note 1) Coil spring for MPLK10.

- Mount it in parallel to the parting line.
- The roller lock set can be removed by pulling it in the direction of arrow in the figure.

## Standard Type (①+②sets)

Catalog No.	Type	No.	Max. usable load (2 sets under normal temp)	L	L1	L2	T	H	H1	J	K	P	P1	P2	A	A1	t	t1	d	d1	A	U/Price	
																					2 pcs. each	1~9 sets	
MPLK (Normal bushing)		10	981N {100kgf}	48	36	25	42	22	18	2	2	36	24	22	24	16	9.5	18	11	6.5	CB6-20 CB6-30	Quotation	
		20	1961N {200kgf}	54	42							40	28				9	16			CB6-20 CB6-25		
		30	2942N {300kgf}	65	46							50	31								CB6-30 CB6-35		
		60	5884N {600kgf}	73	50	35	48.5	25	20	3.5		52	33			27	19	9.5	17	14	9		CB8-30 CB8-35
		*80S	7845N {800kgf}				56.5					11.5											
MPLKS (Slim bushing)		30	2942N {300kgf}	65	46							50	31								CB6-25 CB6-30	Quotation	
		60	5884N {600kgf}	73	50	35	48.5	25	20	3.5		52	33		24	19	9.5	15.5	14	9	CB8-25 CB8-30		
		*80S	7845N {800kgf}				56.5					11.5											

\* T dimensions of MPLK80S and MPLKS80S are 56.5, and K dimensions of them are 11.5.   
 \* For conventional MPLK80, refer to long type.

## Long Type (①+②sets)

Catalog No.	Type	No.	Max. usable load (2 sets under normal temp)	L	L1	L2	T	H	H1	J	K	P	P1	P2	A	A1	t	t1	d	d1	A	U/Price
																					2 pcs. each	1~9 sets
MPLK (Normal bushing)		60L	5884N {600kgf}	73	50	35	79.5	25	20	3.5	34.5	52	33	57	27	19	9.5	17	14	9	CB8-30 CB8-35	Quotation
		80	7845N {800kgf}				87.5				42.5			65								
		100L	9807N {1000kgf}	103	65	48	89	30	24	4	35	76	42	62	34	25	13	19	17	11	CB10-30 CB10-35	
MPLKS (Slim bushing)		80	7845N {800kgf}	73	50	35	87.5	25	20	3.5	42.5	52	33	65	24	19	9.5	15.5	14	9	CB8-25 CB8-30	Quotation

## Lock Bushing Component (② only)

Catalog No.	Type	No.	Application	U/Price
MPLKB (Normal bushing)		10	For MPLK10	Quotation
		20	For MPLK20	
		30	For MPLK30 For MPLKS30	
		6080	For MPLK60 60L 80 80S For MPLKS60 80 80S	
	100	For MPLK100 100L		

Catalog No.	Type	No.	Application	U/Price
MPLKSB (Slim bushing)		30	For MPLKS30 For MPLK30	Quotation
		6080	For MPLK60 80 80S For MPLKS60 80 80S	

※ For use in 2-color molding, insert molding, etc. that require additional lock bushings.



Catalog No.  
MPLK60  
MPLK80S  
MPLKS30  
MPLKB6080



Delivery

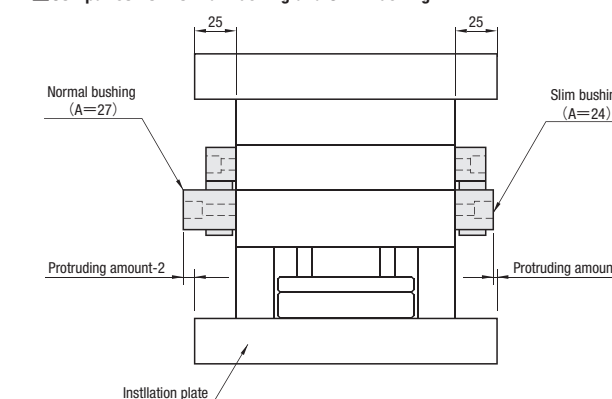
Printed in Red • Printed in Blue  
SGP Stock 3 Days

For area out of Singapore please refer to P.i.

### Quantity discount rate

Quantity	Rate
1~9	—
10~19	5%
20~49	10%
50~100	15%

## Comparison of Normal Bushing and Slim Bushing



### About slim bushings

- For roller lock set slim bushings, the height of lock bushing (A dimension) is standardized as 24mm. The one side of molding base installation board is a standard corresponding to the amount of protrude 25mm.
- When mold is installed in the molding machine, the part where roller lock set protrudes interferes in the tie bar. It becomes the damage prevention of roller lock set and the tie bar. Moreover, there is no trouble in keeping and transporting.
- Although the heights of bushings (A→24, t1→15.5) become lower, the load and other dimensions remain the same as conventional products.

Stocks Availability Subjected to Prior Sales.