

LIFTING EYE BOLTS / CAST-IN LIFTING BOLTS



Printed in Red

HOOKS — BOLT TYPE / LARGE HEAD BOLT TYPE —



Printed in Red

The quantity discount rate is also applicable to alteration cost. All price & lead time are to be quoted.

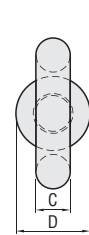
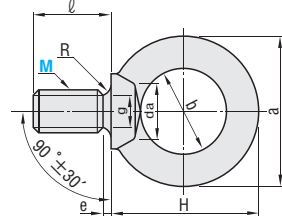
The quantity discount rate is also applicable to alteration cost. All price & lead time are to be quoted.

Lifting eye bolts—For vertical lifting—

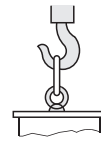
RoHS



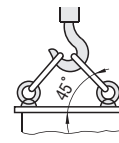
CHI



AType Vertical lift



BType Lift by 45 degrees



M SS400 Bolt precision JIS1168

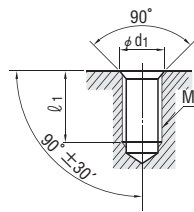
M×P	a	b	C	D	H	l	e	g	R	da	Maximum allowable load (kgf)		CatalogNo.		U/Price Q'ty : 1~19
											A : Vertical 1pc.	B : 45° 2pcs.	Type	M	
6×1.0	24.9	14.5	5.2	12.8	28.45	15	3	4.7	1.0	7.9	392	40	392	40	Quotation
8×1.25	32.6	20	6.3	16	33.3	15	3	6	1.0	9.2	785	80	785	80	
10×1.5	41	25	8	20	41.5	18	4	7.7	1.2	11.2	1471	150	1471	150	
12×1.75	50	30	10	25	51	22	5	9.4	1.4	14.2	2157	220	2157	220	
16×2.0	60	35	12.5	30	60	27	5	13	1.6	18.2	4413	450	4413	450	
20×2.5	72	40	16	35	71	30	6	16.4	2	22.4	6178	630	6178	630	
24×3.0	90	50	20	45	90	38	8	19.6	2.5	26.4	9316	950	9316	950	
30×3.5	110	60	25	60	110	45	8	25	3	33.4	14710	1500	14710	1500	
36×4.0	133	70	31.5	70	131.5	55	10	30.3	3	39.4	22555	2300	22555	2300	
42×4.5	151	80	35.5	80	150.5	65	12	35.6	3.5	45.6	33342	3400	33342	3400	
48×5.0	170	90	40	90	170	70	12	41	4	52.6	44130	4500	44130	4500	

*kgf=N×0.101972

How to install

Fasten the eye bolt lightly so that the seat of the bolt is firmly in contact with the plate.

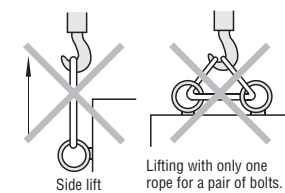
CatalogNo.	d1	l1
6	9	17
8	11	20
10	13	24
12	16	24
16	20	30
20	24	34
24	28	42
30	36	50
36	42	60
42	48	70
48	56	76



When 2 lifting eye bolts are used for lifting, install the bolts so that they face in the same Direction.



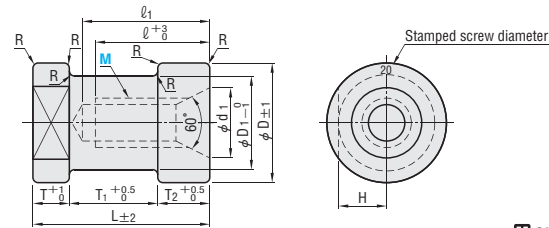
Caution Never attempt the types of lifting shown in the diagram.



Cast-in lifting bushes

RoHS

CSN



M S35C

Hook	Maximum allowable load N (kgf)		M×P	D	D1	d1	l	l1	L	T	T1	T2	H	R	CatalogNo.		U/Price Q'ty : 1~19
	2pcs.	Eye bolt													Type	M	
	Vertical lift/1pc.	Lift by 45 degrees/2pcs.													Quotation		
3730 (380)	2160 (220)	2160 (220)	12×1.75	38	28	18	30	40	55	10	30	15	14	2		12	
6620 (675)	4410 (450)	4410 (450)	16×2.0	46	36	22	35	45	55	10	30	15	18	2		16	
8830 (900)	5880 (600)	5880 (600)	20×2.5	48	38	28	45	55	70	15	35	20	19	2		20	
13340 (1360)	9810 (1000)	9810 (1000)	24×3.0	55	45	36	55	65	85	20	45	20	22.5	2		24	
19810 (2020)	16670 (1700)	16670 (1700)	30×3.5	65	52	42	65	75	95	25	50	20	26	3		30	
58450 (5960)	22560 (2300)	22560 (2300)	36×4.0	85	70	48	75	90	110	30	55	25	35	3	36		

*kgf=N×0.101972



Order

CatalogNo.

CHI 10
CSN 24

Printed in Red Printed in Blue



Delivery

SGP Stock

3 Days

For area out of Singapore please refer to P.i.

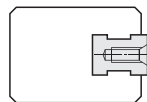
Quantity discount rate

P.i

Quantity	1~19	20~49	50~99	100~200
Rate	—	5%	10%	15%



Example

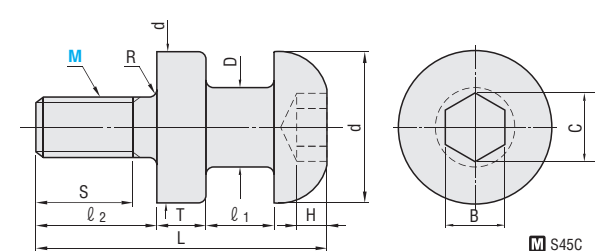


Stocks Availability Subjected to Prior Sales.



RoHS

CHN



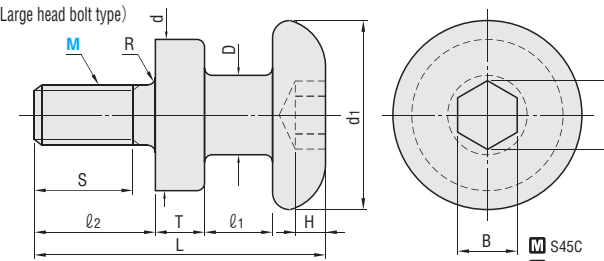
M S45C

S Fe304 (Black oxide)



RoHS

CHNL (Large head bolt type)



M S45C

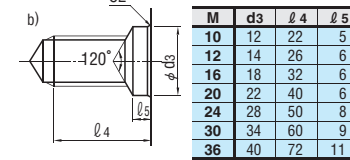
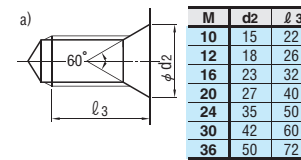
S Fe304 (Black oxide)

M×P	D	d	d1	l1		l2	S	T	L		R	H	B	C	N/1pc. (kgf/1pc. Steel safety coefficient 10)	CatalogNo.			U/Price Q'ty : 1~19	
				CHN	CHNL				CHN	CHNL						Type	M	CHN		CHNL
10×1.5	13	32	42	10	18	20	16	8	46	54	1.5	5	8	9.2	2452 (250)	Quotation	10			
12×1.75	16	36	48	13	20	24	20	10	57	64	1.5	6	10	11.7	3530 (360)		12			
16×2.0	20	40	52	18	25	30	25	13	75	82	2	9	14	16.3	6669 (680)		16			
20×2.5	25	48	62	20	28	37	32	16	90	98	2	12	17	19.8	10395 (1060)		20			
24×3.0	32	58	76	25	33	47	40	20	111	119	2.5	13	19	22.1	15004 (1530)		24			
30×3.5	36	68	88	30	40	56	48	22	131	141	3	16	22	25.6	23830 (2430)		30			
36×4.0	40	78	100	30	40	68	58	25	148	158	3	18	27	31.4	34814 (3550)	36				

*kgf=N×0.101972

How to Install

The bolt holes for installation should be machined as shown in figure a) or b) below. The head of CHN and CHNL should be in tight contact with the side surface of the die set when the bolts are used.



Order

CatalogNo.

CHNL20

Printed in Red Printed in Blue



Delivery

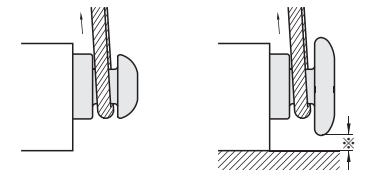
SGP Stock

3 Days

For area out of Singapore please refer to P.i.



Example



<Large head bolt type> Install so that the wire can be passed under the hook without contacting the bottom surface.

Stocks Availability Subjected to Prior Sales.